

55 The effect of lymphadenectomy extent on early postoperative undetectable PSA rate among prostate cancer pT3b R0 patients at West-Tallinn Central Hospital




Okas R.¹, Alas I.²

¹Tartu University, Faculty of Medicine, Tallinn, Estonia,

²West-Tallinn Central Hospital, Dept. of Urology, Tallinn, Estonia

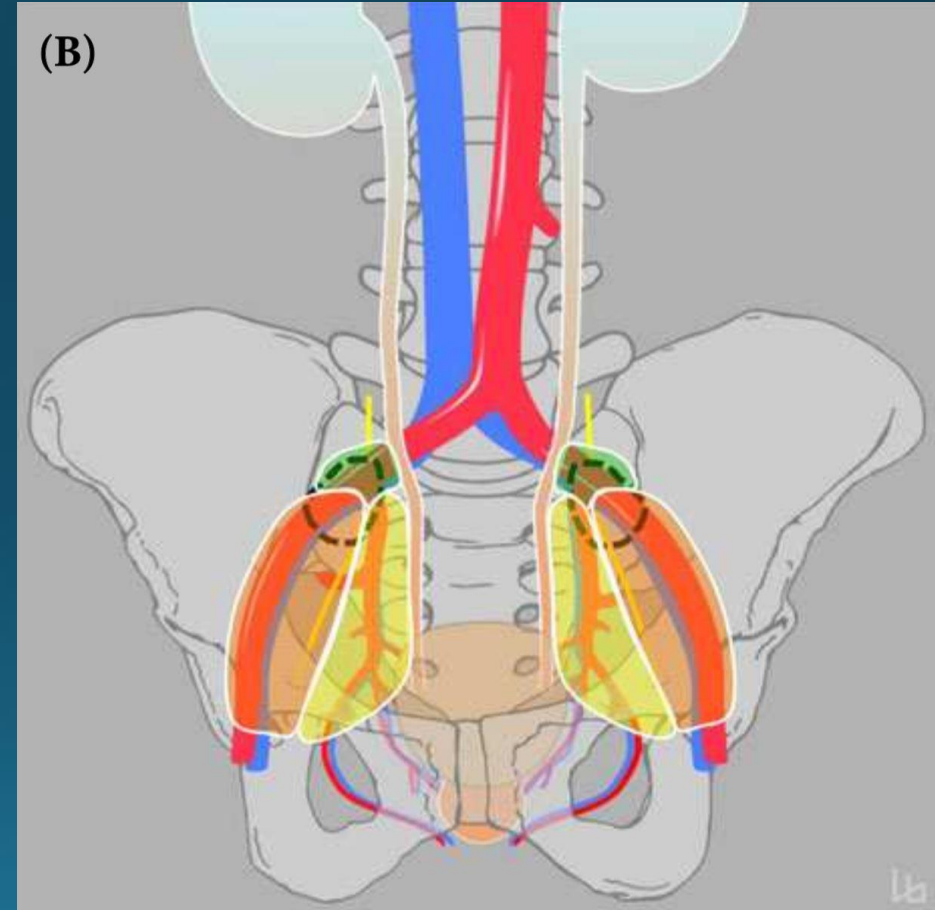
Conflict of Interest Disclosure: I have no potential conflict of interest to report

Materials and Methods

- **530 prostatectomy patients** at West-Tallinn Central Hospital urology department 2004-2017
 - Median age 65 (min 56, max 78) years
 - **56 patients pT3b**
 - 22 pts R1
 - **34 pts R0**
 - 3 R0 pts had 4 or more malignant lymph nodes
- 
- **31 pT3b R0 patients -> PSA 5-7 weeks**
 - 14 lap
 - 17 open

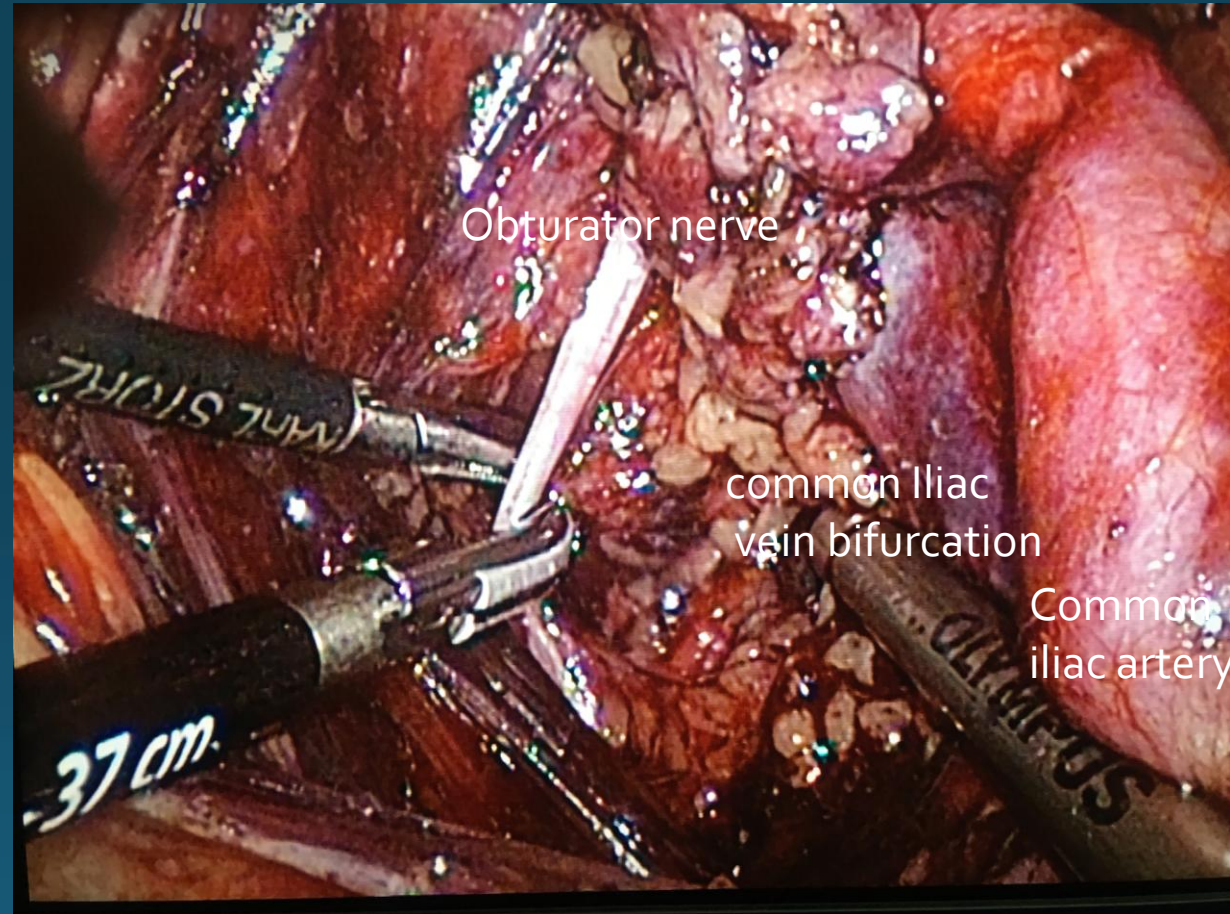
Materials and Methods

- Lymphadenectomy regions (LNR) were following:
 - internal iliac (lateral);
 - obturator;
 - external iliac;
 - common iliac;
 - Marcille fossa;
 - around ureter (internal iliac medial)
 - anterior fat → LNR 11-13
- LNR 1-6
- LNR 7-8
- LNR 10-12

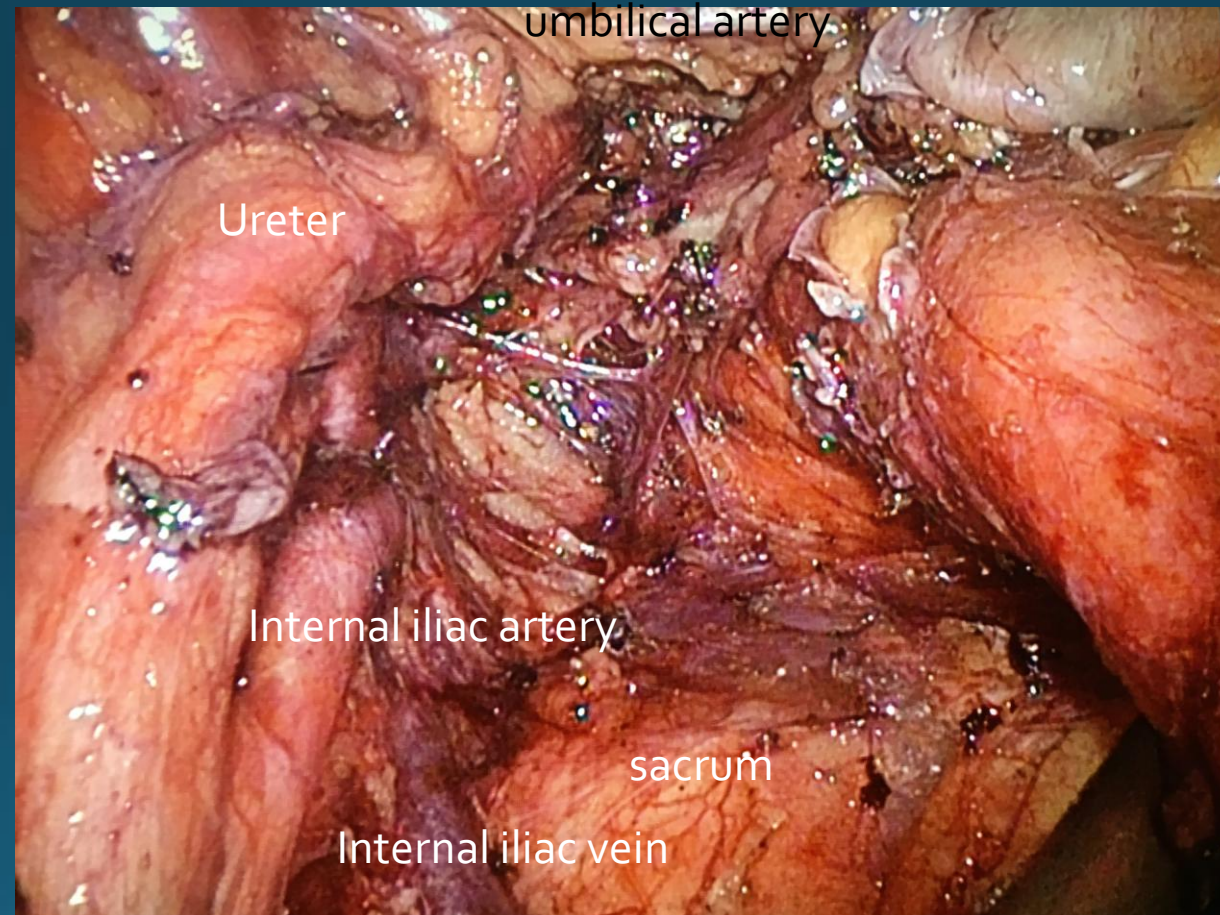


Maderthaner 2017, BJUI

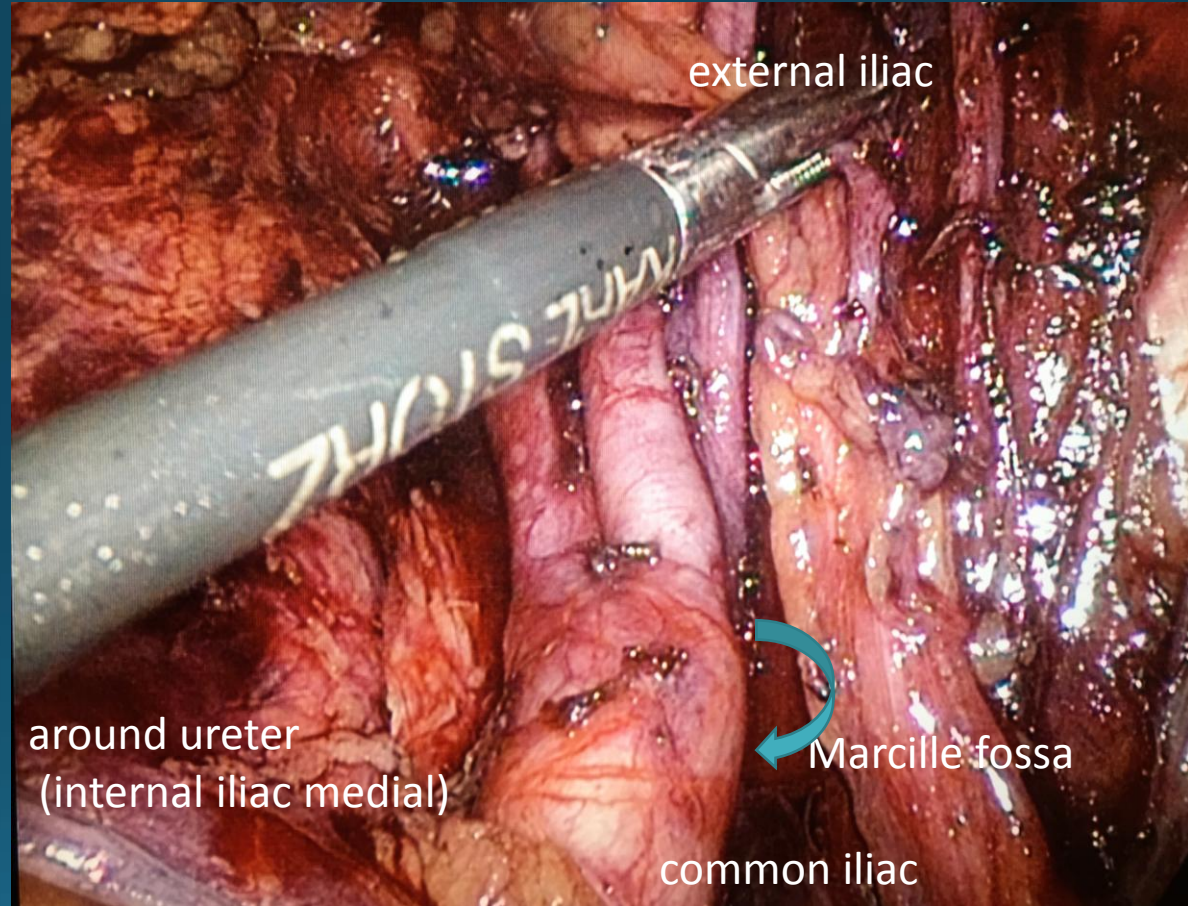
common iliac Marcille fossa (left side)



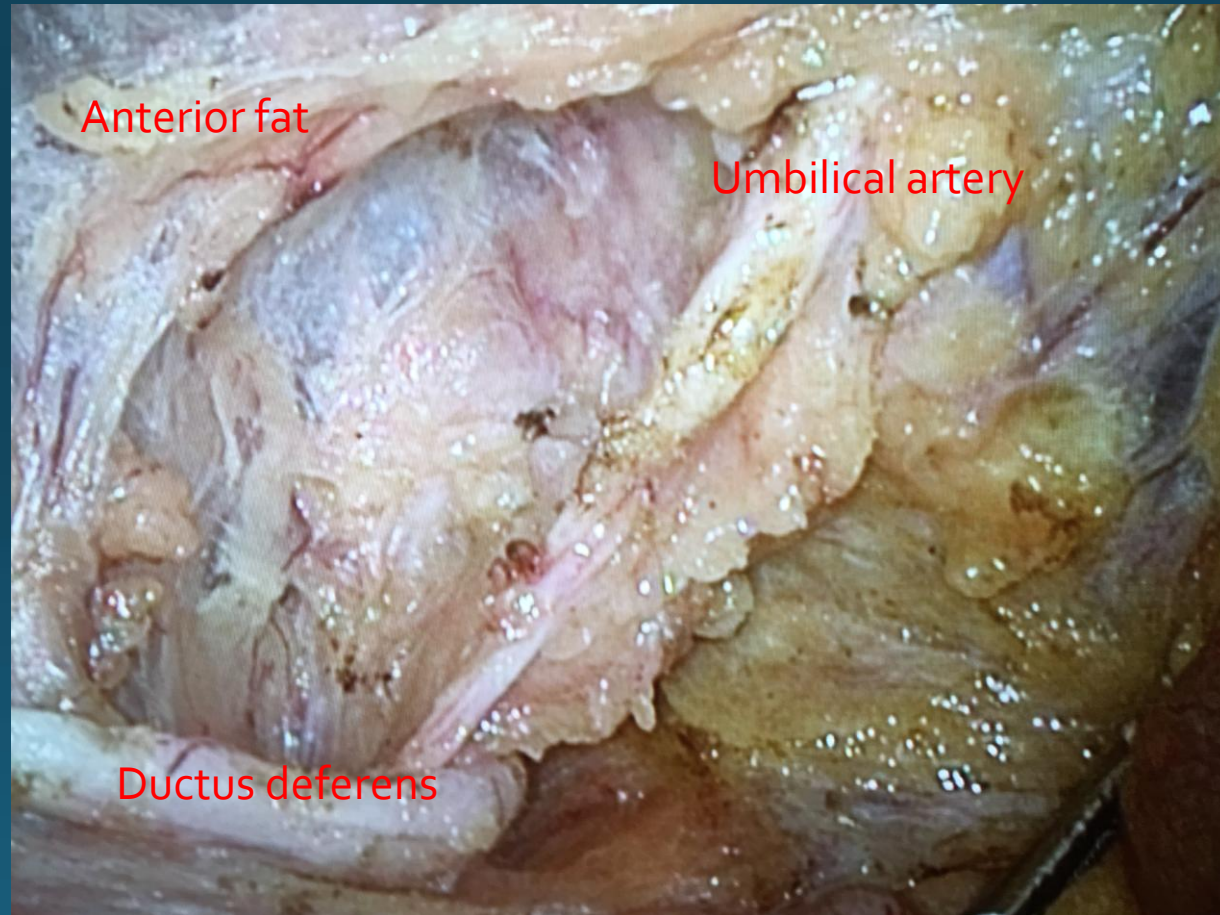
around ureter (internal iliac medial - left side)



Overview (right side)



anterior fat (a view from the left)



Results

Lymphadenectomy extent	Number of patients	PSA \geq 0.1 (ng/ml)	PSA < 0.1 (ng/ml)	% PSA < 0.1
1-6	6	2	4	67%
7-10	17	5	12	71%
11-13	8	1	7	88%

Positive Lymph nodes	Number of patients	PSA \geq 0.1 (ng/ml)	PSA < 0.1 (ng/ml)	% PSA < 0.1
0	17	2	15	88%
1-2	10	5	5	50%
3	4	1	3	75%

Results

Variable	Odds Ratio	P-value	95% CI
<i>LNR group</i>			
LNR 1-6	1.00		
LNR 7-10	0.46	0.433	0.67 – 3.19
LNR 11-13	0.20	0.307	0.01 – 4.43
<i>Positive LN group</i>			
0	1.00		
1-2	3.78	0.140	0.65 – 22.08
3	4.50	0.347	0.20 – 103.92

Logistic regression analysis showing odds ratios for having PSA \geq 0.1 5-7 week postoperatively by lymphadenectomy regions and positive lymph nodes groups in 31 patients with pT3b R0 pCa

Conclusion

Our study shows that there was more undetectable PSA 5-7 weeks after surgery among prostate cancer pT3b Ro patients that had Bern ePLND 2010-2015 when compared with patients that had lesser extent of lymphadenectomy. However due to small groups these results cannot be extended to general population.